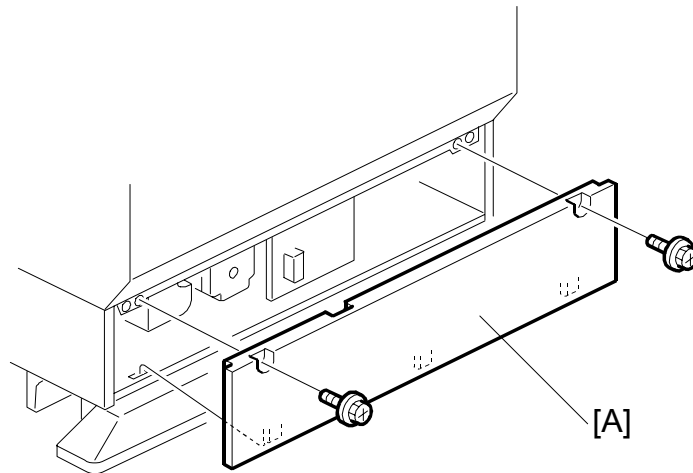


ONE-TRAY PAPER FEED UNIT

(Machine Code: B601)

1. REPLACEMENT AND ADJUSTMENT

1.1 COVER REPLACEMENT

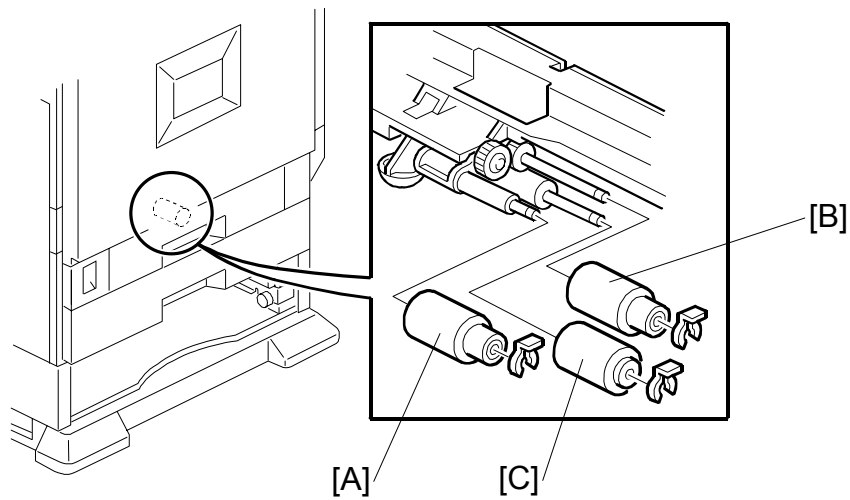


B601R102.WMF

1. Rear cover [A] (🔩 x 2)

1.2 ROLLER REPLACEMENT

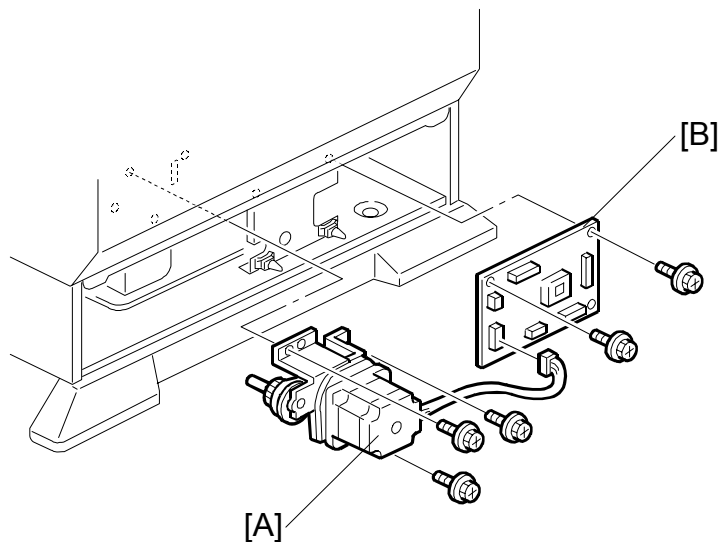
1.2.1 PAPER FEED, SEPARATION, AND PICK-UP ROLLERS



B601R101.WMF

1. Paper tray
2. Pick-up roller [A] (1 hook)
3. Paper Feed Roller [B] (⌘ x 1)
4. Separation Roller [C] (⌘ x 1)

1.3 PAPER FEED MOTOR AND MAIN BOARD

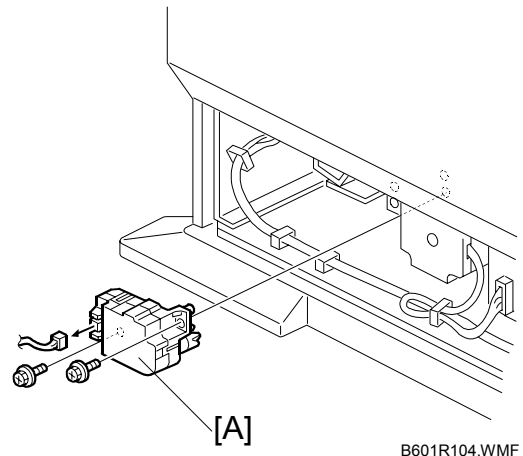


B601R103.WMF

1. Rear cover (☛ 1.1)
2. Paper feed motor [A] (☛ x 1, ☛ x 3)
3. Main board [B] (☛ x 2)

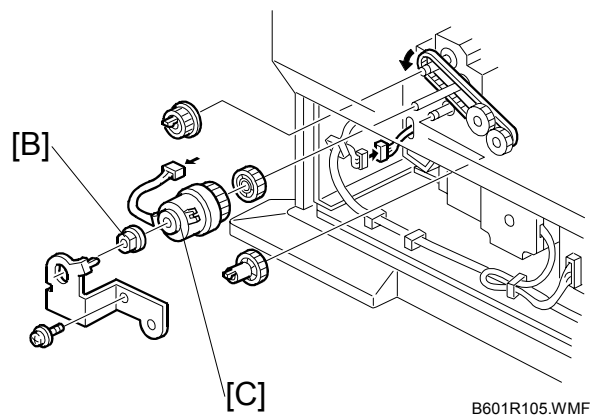
1.4 TRAY LIFT MOTOR

1. Rear cover (🔩 1.1)
2. Tray lift motor [A] (🔌 x 1, 🔩 x 2)

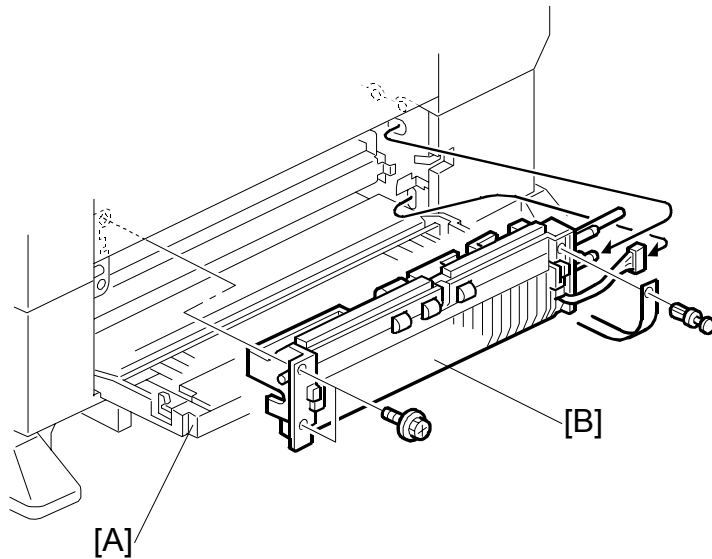


1.5 PAPER FEED CLUTCH

1. Rear cover (🔩 1.1)
2. Bracket [B] (🔩 x 1)
3. Bushing
4. Paper feed clutch [C]



1.6 PAPER FEED UNIT REPLACEMENT



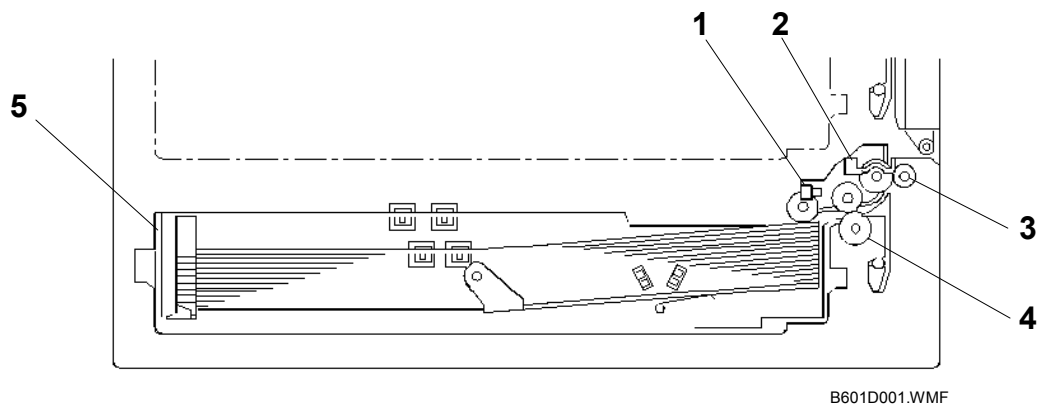
B601R106.WMF

1. Right cover [A]
2. Paper feed unit [B] (⚙ x 2, 📄 x 1)

2. DETAILED DESCRIPTIONS

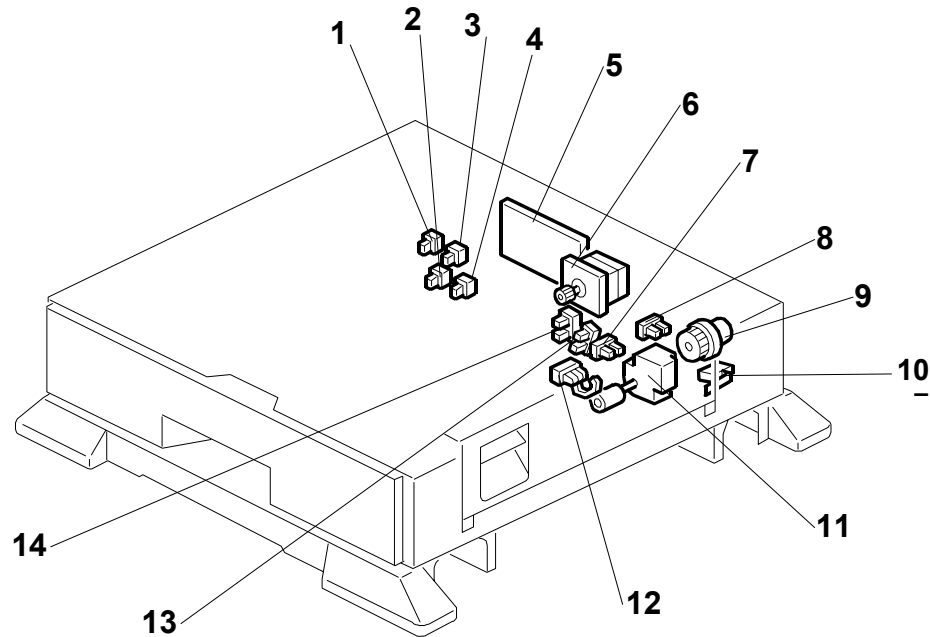
2.1 OVERVIEW

2.1.1 MECHANICAL COMPONENT LAYOUT



1. Pick-up Roller
2. Paper Feed Roller
3. Relay Roller
4. Separation Roller
5. Tray

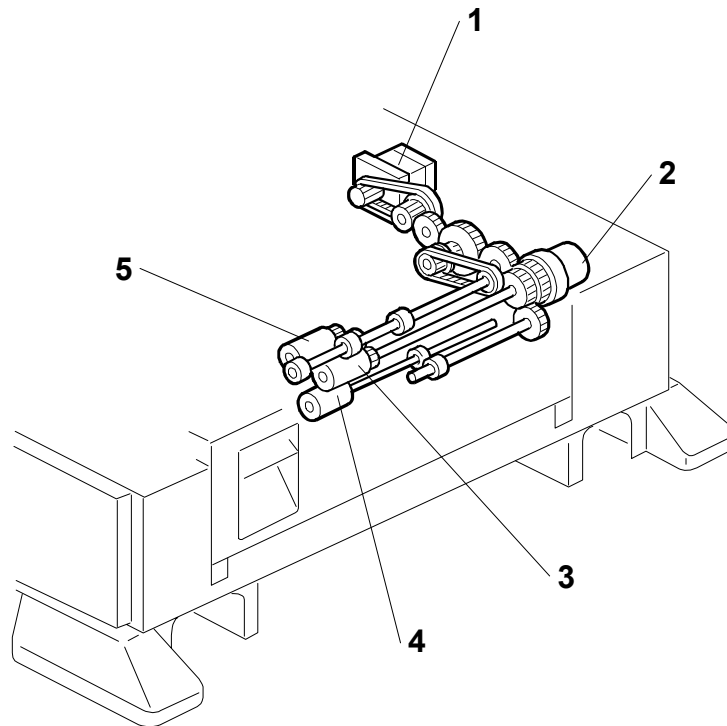
2.1.2 ELECTRICAL COMPONENT LAYOUT



B601D101.WMF

- | | |
|------------------------|---------------------------|
| 1. Paper Size Switch 1 | 8. Lift Sensor |
| 2. Paper Size Switch 2 | 9. Paper Feed Clutch |
| 3. Paper Size Switch 3 | 10. Vertical Guide Switch |
| 4. Paper Size Switch 4 | 11. Tray Lift Motor |
| 5. Main Board | 12. Relay Sensor |
| 6. Paper Feed Motor | 13. Paper Height 2 Sensor |
| 7. Paper End Sensor | 14. Paper Height 1 Sensor |

2.1.3 DRIVE LAYOUT



B601D102.WMF

1. Paper Feed Motor
2. Paper Feed Clutch
3. Paper Feed Roller
4. Separation Roller
5. Pick-up Roller